



Guide to Plant Health Care

Promoting the Vitality and Longevity
of Your Landscape



Table of Contents

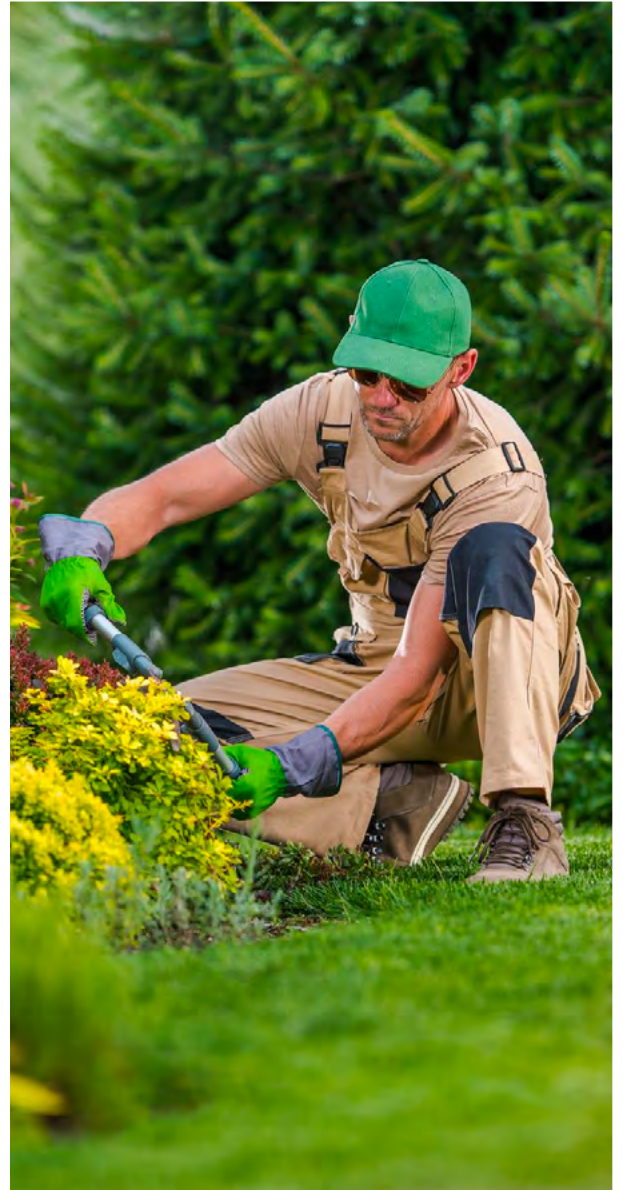
Importance of Plant Health Care	1
Fertilization	2
Insect and Disease Control	4
Deer-Proofing Measures	6
Seasonal Plant Health Care	8
Customizing Your Plant Health Program (Our Plans)	9
Benefits of Our Plant Health Program	11
About Dream Greener Lawn and Landscape	12
Contact Information	13

Importance of Plant Health Care

Similar to how our own well-being relies on regular check-ups and a balanced diet, our trees, shrubs and plants also require consistent care. Without proper attention, they can succumb to diseases, pests, and lack of essential nutrients, water, and sunlight, leading to their decline.

With our Plant Health Care services, we prioritize the thriving condition of your plants through:

- ✓ Essential maintenance
- ✓ Protection against pests
- ✓ Enhancing the beauty of your landscape
- ✓ Empowering you as a home or property owner



Value of a Healthy Landscape

A well-kept landscape increases property value, improves curb appeal and boosts our physical and mental health by providing opportunities for recreation and relaxation.



Risks of Neglecting Plant Health

Neglecting the health of your landscape plants exposes you to threats such as diseases, insect infestations, and the risk of accidents and property damage due to falling branches and overgrowth.



The Ecological Impact

Healthy plants exhibit greater resistance to pests, diseases, and environmental stressors, reducing the need for pesticides. Plants also play a pivotal role in absorbing pollutants from the air and water.



Our Fertilization Approach

We can help your landscape bloom with our expert knowledge of key fertilization factors:

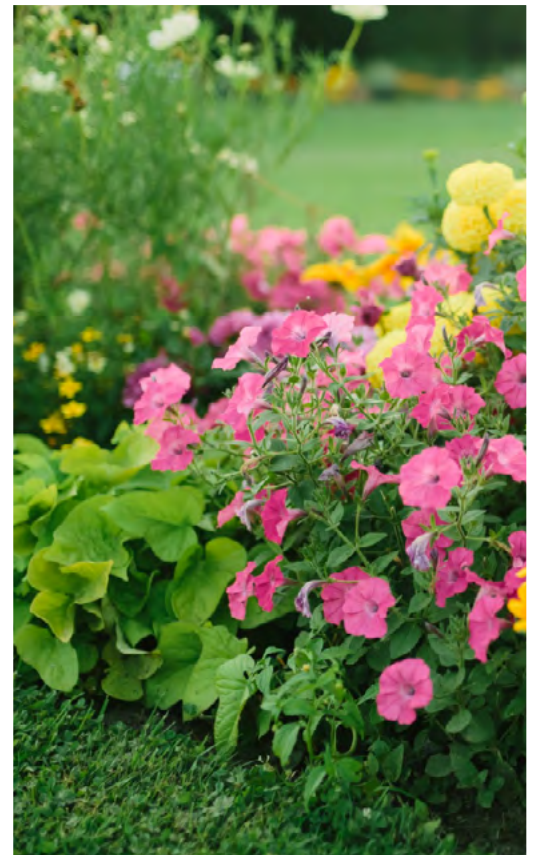
- ✓ timing
- ✓ methods
- ✓ products

Timing

Fertilization for Plant Health Care (PHC) is typically applied at specific times throughout the year based on the needs of the plants and the specific requirements of the region. The timing of fertilization can vary depending on factors such as the type of plants, soil conditions, climate, and growth cycles.

In general, fertilization is commonly performed during the active growing season when plants have higher nutrient demands. This is often in the spring and fall, as these periods provide optimal conditions for plants to absorb and utilize nutrients effectively. However, the exact timing and frequency of fertilization may vary based on the specific needs of your landscape.

By consulting with a knowledgeable plant health care specialist, you can determine the best fertilization schedule tailored to your plants' requirements and the unique characteristics of your landscape. They will consider factors such as soil testing results, plant health assessments, and environmental conditions to develop a customized fertilization plan that maximizes the health and vitality of your plants.





Methods

For fertilization, we employ various methods, including sub-surface root zone fertilization practices. This technique involves applying fertilizers directly to the root zone of plants, where they can be readily absorbed and utilized. By targeting the roots, we ensure efficient nutrient uptake and minimize waste.

In addition to sub-surface root zone fertilization, we may also utilize other methods such as surface application, foliar spraying, or deep root injections, depending on the specific needs of your plants and the recommendations of our experts. These methods allow us to deliver nutrients effectively and address any deficiencies or specific requirements identified during our plant health assessments.

Our goal is to provide your plants with the necessary nutrients in a manner that maximizes their health and minimizes any potential environmental impact. By utilizing a combination of proven fertilization methods, we can tailor our approach to meet the unique needs of your landscape and promote optimal plant growth and vitality.

Products

At Dream Greener, we use a variety of fertilization products to meet the specific needs of your plants. For our sub-surface root zone fertilization method in the early spring and fall, we employ a customized mix of liquid fertilizer. This blend is carefully formulated to provide the necessary nutrients for optimal plant growth and health.

To apply the liquid fertilizer to the root zones of your trees and shrubs, we utilize a commercial fertilizer lance. This specialized equipment allows us to inject the fertilizer directly into the soil around the root zone, ensuring precise placement and maximum absorption by the plants. This method promotes efficient nutrient uptake and minimizes any potential waste or environmental impact.

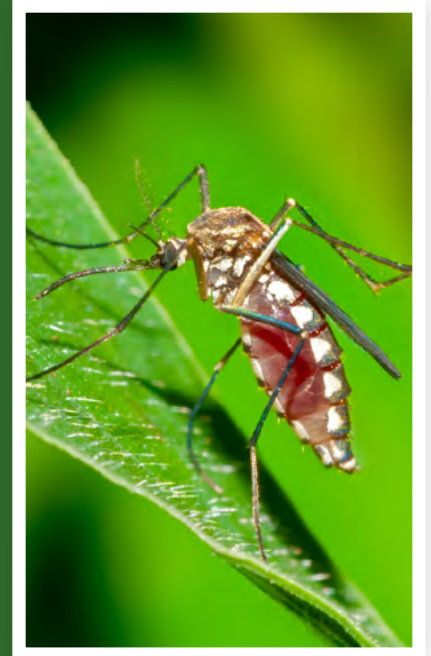
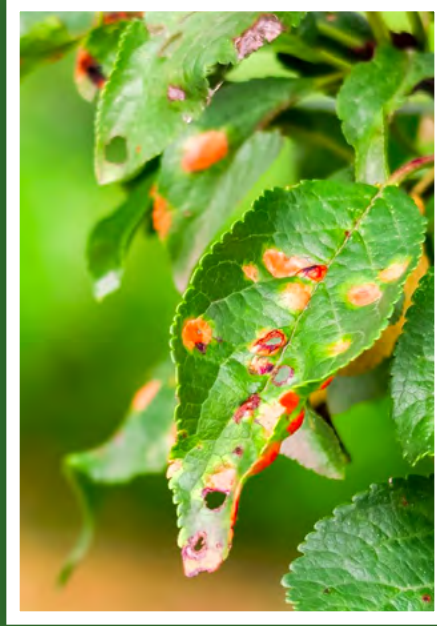
Our team is trained in the proper use of equipment and follows industry best practices to ensure safe and effective application of fertilizers. We are committed to using high-quality products and employing techniques that promote the well-being of your plants while minimizing any negative effects on the environment.



Insect and Disease Control

We protect against disease-carrying pests by Safeguarding your environment from:

- ✓ fleas
- ✓ ticks
- ✓ mosquitoes



How Insects Cause Damage to Your Landscape



Spreading Diseases to Plants

Fleas, ticks, and mosquitoes can carry and transmit a variety of plant diseases, such as viruses, bacteria, and fungi. These diseases can damage or even kill plants, depending on the severity of the infection.

Feeding on Plant Sap

Fleas, ticks, and mosquitoes can also feed on the sap of plants. This can weaken plants and make them more susceptible to pests, diseases, and environmental stressors.

Causing Stress to Plants

The presence of fleas, ticks, and mosquitoes can also cause stress to plants by depriving them of the resources they need to grow and thrive. Stressed plants are more likely to be susceptible to pests and diseases.

Common Insects and Diseases



Fleas

Fleas are a common bothersome pest that can transmit diseases to pets and humans, like typhus, plague, and tularemia. Fleas can be found in shaded areas like bushes and shrubs, leaf litter, wood piles, and areas where wildlife is present, which is why you'll find them on your furry friends.



Ticks

Ticks are small blood-sucking arachnids that can be found in tall grass, wooded areas, or near stone walls and rock piles. They attach themselves to humans and animals and can transmit diseases such as Lyme, Rocky Mountain spotted fever, and Ehrlichiosis which can be transmitted from deer.



Mosquitoes

The common pest is a small, flying insect that can bite humans and animals. They transmit diseases such as Malaria, Dengue Fever, and West Nile Virus. They can be found in your landscape if you have stagnant water, live near marshes and swamps, or have areas full of tall grass or weeds.

Our Control Measures

Treatment Methods

What products and equipment are used for fleas, ticks, and mosquitoes? Lorem ipsum dolor sit amet. Lorem ipsum dolor sit amet. Lorem ipsum dolor sit amet. Lorem ipsum dolor sit amet. Lorem ipsum dolor sit amet.

Preventive Measures

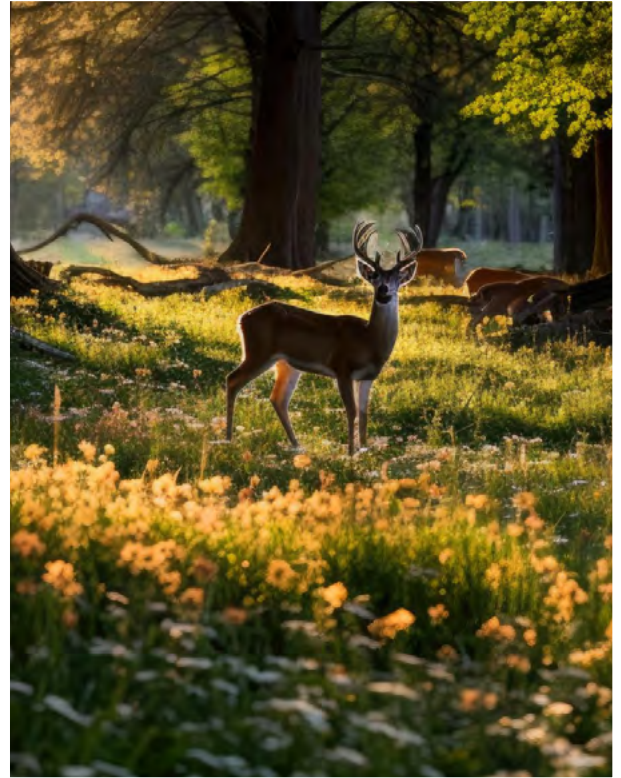
We have a pollinator protection policy in place, pledging to no use certain products when bees are present, and we engage in ongoing research to ensure we're using the safest, most effective products and techniques available.



Deer Proofing Measures

Deer can be a nuisance in our yards and gardens, but there are several strategies we use at Dream Greener that can keep them at bay so your landscape can thrive.

- ✓ fencing
- ✓ repellents
- ✓ plant selection



The Problem With Deer



Deer may seem harmless, but they can cause a lot of damage to your landscape and garden. They will eat vegetables, flowers, and ornamentals, and they can merely trample over your plants causing worse damage. Male deer can also rub their antlers on trees, damaging the bark and stunting the tree's growth.

In addition to the damage they can cause to plants, deer can also carry diseases that are harmful to humans, such as Lyme disease and Ehrlichiosis. These diseases can be transmitted to humans through tick bites.



Our Deer-Proofing Program

We understand the importance of maintaining a beautiful landscape while also addressing the potential threats posed by deer. That's why we offer a deer repellent program exclusively to our full-service landscape maintenance clients. This program utilizes products that repel deer through taste and smell aversion, providing a humane balance between nature and aesthetics.

After our deer repellent application, if deer still decide to nibble on susceptible plants, they will typically move along quickly, minimizing the feeding damage that could have occurred otherwise. This program offers an effective and cost-efficient way to reduce the risk of deer feeding damage.

However, it's important to note that external factors can influence the level of control achieved. If winter is harsher or longer than normal, or if food is scarce, deer may still opt for an unpleasant meal rather than going without. Additionally, there are other threats, such as buck rubs on tree trunks, which can cause significant damage to landscape plants. Please be aware that our deer repellent program does not control this type of damage.

Fencing

The only way to fully eliminate feeding and trunk injury from antler rubs is adequate fencing. Our deer fencing services are customized to each property based on susceptible plants and deer populations.

Repellents

Our program consists of 6 visits from our knowledgeable specialists who will inspect and then apply deer repellent to your landscape plants. Visits are spaced out 6 to 8 weeks apart. Properties with heavy deer traffic may need to add supplemental visits or fencing services during the winter months for maximum protection.

Plant Selection

If you live in an area where deer activity is high, we recommend selecting these plants that are generally less likely to be eaten by deer.

Annuals

Marigolds, Pansies,
Petunias, Sunflowers

Shrubs

Boxwood, Barberry, Holly,
Juniper, Lilac

Trees

Birch, Dogwood, Fir, Maple,
Oak, Pine

Perennials

Asters, Bee balm,
Black-Eyed Susans,
Coneflowers, Coreopsis,
Daylilies, Ferns,
Hostas, Lavender,
Poppies, Russian Sage,
Ornamental Grasses.

Seasonal Plant Health Care



Spring

Our tree and plant health program begins in late winter to early spring with a coating of dormant oil on bark and foliage. Root zone fertilization and late spring insect and disease control also take place during the first months of spring. This is also when insect and disease activity is most prone to damage tender new growth on your landscape plants



Summer

Our accomplished team of arborists executes a custom program by employing pest identification, knowledge of pest lifecycles, and accurate timing of controls. Protection from insects and diseases in the summer will ensure that your landscape plants are healthy, vigorous, and beautiful.



Autumn

Autumn is a great time to control late-season pests such as fall webworm caterpillars. Many insects are still actively feeding through fall and early winter. Controlling insects prior to egg laying will result in lower populations and risk of damage in the spring.

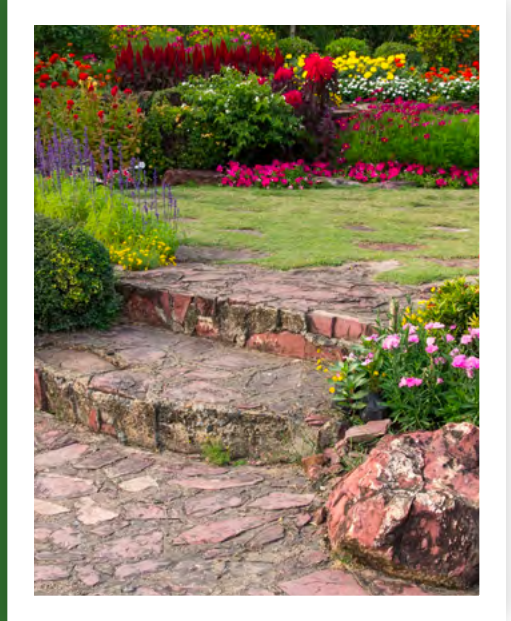


Winter

Trees and shrubs need winter protection to look their best year-round. Applying an anti-desiccant to susceptible foliage at the onset of winter will reduce drying and browning during harsh weather and low temperatures. Plants will recover from winter dormancy in a healthier state.

Customizing Your Plant Health Care Program

At Dream Greener Lawn and Landscape, we understand that each landscape is unique. We take a science-based approach, carefully considering your soil types, insect and disease issues, shade availability, and other factors to create a customized Plant Health Care program tailored to your specific needs. We will work closely with you to ensure that your landscape thrives for years to come.



How We Tailor Our Services

Our plant health program employs integrated pest management techniques and best practices. Our primary goal is to create and sustain an ecologically friendly environment for pollinators and other beneficial insects while effectively managing destructive pests below harmful thresholds. With certified arborists on our team, we conduct thorough inspections of your plants and trees to identify potential issues. Throughout the year, we provide timely guidance on watering, mulching, and pruning, continually evaluating your plants during each visit. Our approach is grounded in science, utilizing a proven process that consistently delivers results.

Consultation Process

Once you book a consultation with one of our Dream Greener plant health care professionals, we will:

- ✓ Schedule a time to visit your property.
- ✓ Send you an email with a questionnaire to learn more about your needs and goals.
- ✓ Visit your property to conduct a plant analysis. This will include assessing the soil type, insect and disease issues, sun and shade availability, and pruning and treatment requirements.
- ✓ Review the results of the plant analysis with you and develop a customized plant health care plan.
- ✓ Answer any questions you have about the plan.

Cost Estimates

We are committed to transparent and budget-friendly pricing so our clients can achieve their dream landscape without breaking the bank.

Plant & Lawn Health Treatments

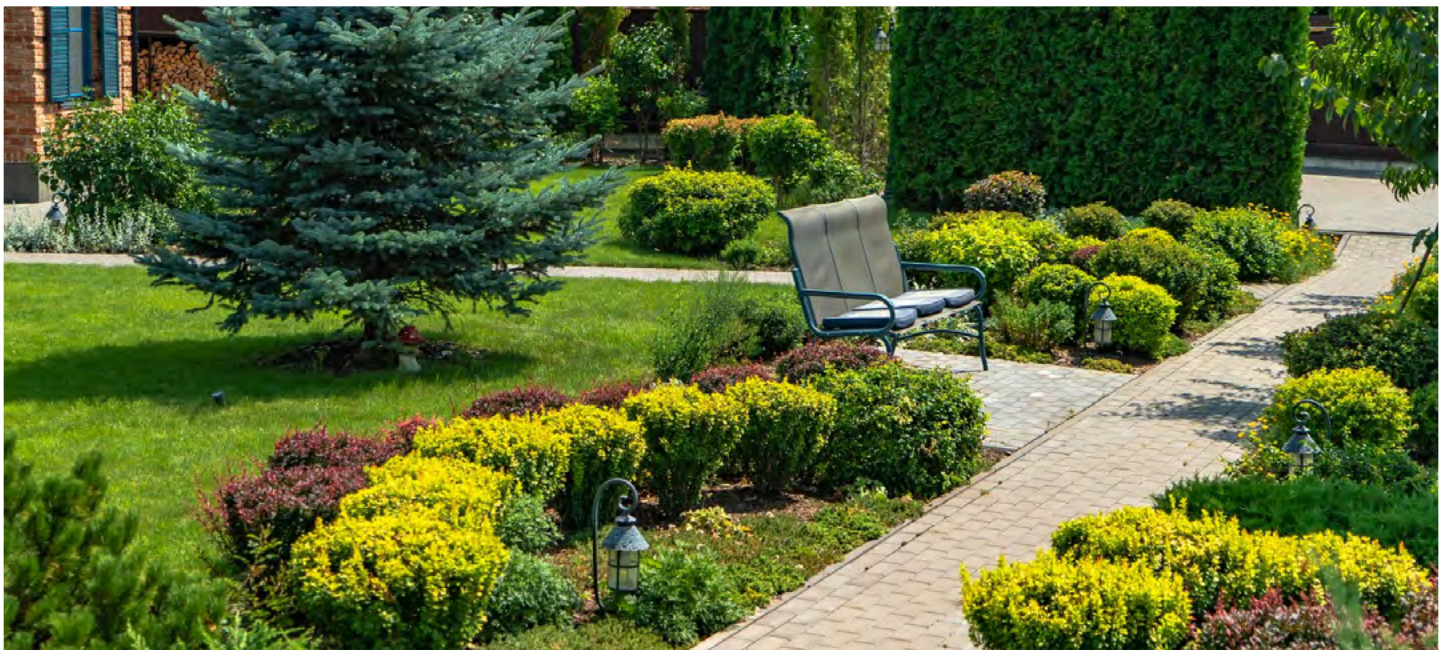
Starting at \$220 per season

Pest Control Services

Starting at \$220 per season

Flea, Tick & Mosquito Treatments

\$75 and up per treatment (6 visits per year, with a 4-visit minimum)



Benefits of Plant Health Care Programs



Increased Property Value

Well-maintained mature trees, in particular, can significantly enhance property value compared to properties with younger plantings, providing a substantial return on investment.

Environmental Benefits

Trees and plants offer a range of environmental benefits, such as producing fresh air and oxygen, improving water quality, filtering runoff, providing wildlife habitats, and contributing to pollution reduction and noise control.

Peace of Mind

Your landscape's tidiness, cleanliness, and well-maintained appearance create a peaceful haven for relaxation and unwinding. Enjoying a pest-free and healthy landscape can have a positive impact on your overall mood and well-being, relieving you of your every day worries.





About Dream Greener

Testimonials

Testimonials: do we want to just include screenshots of the testimonials? Most of the testimonials are about landscape design and lawn services. May take a while to find one where they mention PHC. We only recently added flea and tick and mosquito and do not currently have reviews.

Company History

Back in 2013, Dream Greener Lawn & Landscape started as a small, homegrown operation in Carnegie, Pennsylvania, right out of a residential garage. Fast forward to today, and our landscape contracting business has grown substantially.

Our headquarters now sits on a spacious six-acre property, carefully developed to include a thriving nursery and a range of top-notch landscaping materials like premium soil, compost, mulch, decorative stone, gravel, and more.

We've expanded our reach and proudly serve a wide-ranging client base, with a focus on areas like Mt. Lebanon, Pennsylvania, and the neighboring communities of Betel Park, Presto, Southpointe, Oakdale, and Pittsburgh, among others.

At Dream Greener Lawn & Landscape, we take a science-based approach to our work. We rely on empirical science as the foundation of our services, which cover everything from lawn care and landscape design to plant health management and snow removal, as well as various specialized offerings.



Contact Information

Get In Touch

If you're excited about nurturing your landscape to its fullest potential, Dream Greener is ready to assist you! Give us a call or visit our website to explore how we can transform your dream landscape into a reality. We look forward to hearing from you and helping you achieve the landscape of your dreams.

 [\(412\)835-1035](tel:(412)835-1035)

 dreamgreener.com

 facebook.com/dreamgreener

Next Steps

Schedule an appointment Online

15-Minute Consultation Call

Personalized Assessment & Dream Meeting

Plan Proposal

Plan Approval + Agreement Signing

Installation + Continuous Care

Final Walkthrough + Ongoing Maintenance



DREAM
GREENER
LAWN & LANDSCAPE LLC
dream properties growing greener!