



Guide to Landscape Design & Build

How We Create Beautiful, Functional, and Sustainable Outdoor Spaces for Homeowners



Table of Contents

The Importance of Landscape Design and Build	1
Our Services	2
Our Design Philosophy	4
What to Expect	6
Case Studies	8
Our Process	12
Funding Your Project	13
About Dream Greener Lawn And Landscape	14
Contact Information	15

The Importance of Landscape Design & Build



Our landscapes are more than just an extension of our homes or properties; they are an integral part of our lives. The appearance and maintenance of our landscapes have a direct impact on our emotional and financial well-being, as well as the environment we inhabit. It is crucial to prioritize the care and aesthetics of our landscapes to create a harmonious and sustainable living environment for ourselves and future generations.

Emotional Benefits

Landscape design can have a positive impact on your health and well-being by mitigating stress, improving mood, boosting immunity, and increasing physical activity by providing a comfortable and functional space to enjoy the outdoors.

Financial Benefits

Property renovations equipped with proper landscaping can increase a home's resale value by an average of 15-20%. This helps to create an aesthetically pleasing home that is ultimately more attractive to potential buyers.

Environmental Benefits

Landscape designs can improve air quality, reduce noise pollution, and filter pollutants. Trees and other natural elements can also absorb sound and regulate temperatures. This can help to mitigate water runoff and create a more sustainable landscape.

Our Services



Your property is a reflection of who you are, creating an impression on your guests, friends, neighbors, and community. However, more importantly, it should fulfill your needs and desires. At Dream Greener Lawn & Landscape, we understand the importance of aligning our services with your specific considerations. We are driven by your unique requirements and preferences. Landscaping is a significant endeavor, whether it involves plantings or pavers, walls or waterfalls, stonescapes or serenity spaces. It may be to enhance the beauty and value of your property, create outdoor entertaining space, or establish a serene personal retreat. We offer a comprehensive range of landscaping services to cater to all these needs.



Landscape Design

Our landscape design services are tailored to your unique needs and vision. We work closely with you to create a landscape that is both beautiful and functional, and that you will love for years to come.

- Our sales process begins with a meeting to fully understand your vision for your landscape. We believe in collaboration, so we work closely with you to create a design that not only meets your needs but also fits within your budget. Our goal is to bring your vision to life while ensuring that the final result aligns with your expectations and financial considerations.
- Our team of experienced landscape designers can help you make informed choices about plant selection, material selection, and placement of desired features.



Landscape Installation

Our landscape installation services are designed to give you a hassle-free experience, from start to finish.

- We work closely with you to understand your needs and vision for your landscape whether it's installing landscaping boulders, seasonal plantings, patios, pathways, mulch, sod, and more.
- We provide thorough site analysis, construction planning, and permit coordination.
- We use high-quality materials and construction techniques to ensure that your landscape is durable and long-lasting.



Outdoor Living

Our outdoor living services can help you create a functional and beautiful space where you can enjoy spending time with friends and family.

- We start with a Dream Meeting to ensure we fully understand your vision. Plus, it gives us an opportunity to assess your property and identify potential challenges or ideas for down the road.
- A collaborative process that encourages your feedback and results in an accurate quote and detailed plan.
- Our team includes landscape designers, craftspeople, certified arborists, project managers and other experts to ensure everything is done right the first time.
- We can handle all the details—site analysis, permit filing, site management and more.
- Our analytical approach is based on science and supported with advanced technology for precise results.
- We stock a warehouse and nursery with plants and materials for our projects, saving you time and money as we move forward with construction.

Our Design Philosophy



Experience a streamlined approach for all your outdoor projects, regardless of size or goals. Our team at Dream Greener Lawn & Landscape ensures easy collaboration, clear investment understanding, and hassle-free results. Partner with us, and our science-based approach will tailor your outdoor living space to your home and family's needs.

Client Collaboration

Our approach to outdoor living space is all about you. We believe in understanding your unique wishes, needs, and property to create outdoor spaces that perfectly align with your lifestyle and preferences. We also offer a Communication Promise that guarantees responses to your messages within an hour and within 24 hours if we receive them when we're not in the office.





Science-Based Technology

We take pride in our science-based, technology-forward approach to outdoor living. This means we use the latest techniques and tools to ensure your outdoor space not only looks beautiful but also functions seamlessly for years to come.

Holistic Approach

When it comes to landscape design, we believe in looking at the big picture. Our philosophy is to balance aesthetics, materials, architecture, budget considerations, and maintenance requirements to create a landscape design that is not just visually appealing but also practical and cohesive.

Sustainability

Quality and durability are at the core of our landscape installation philosophy. We are committed to delivering features that stand the test of time, meeting your long-term needs, and ensuring your investment pays off.

Accountability

Our team takes professionalism seriously. When we work on your landscape installation, you can expect punctuality, a strong work ethic, and the utmost respect for your property. We take responsibility for the entire project, from permit coordination down to the tiniest detail and we give you all the information you need about warranties, maintenance, and ideas for the future.



What to Expect



Booking

Once you fill out our contact form, you will be directed to a page where you can schedule a 15-minute consultation call. Our team will then call you at your selected time and discuss your project for 15 minutes. We will determine whether Dream Greener is a good fit for your project, and if so, we will give you an idea of what to expect during our on-site visit.

Preparation

By coming prepared with the considerations on the following page, you'll be able to have a productive and focused consultation meeting. Our team will be able to better understand your vision and provide tailored recommendations based on your goals, budget, and preferences.

Planning and Timeline

The timeline for planning and implementing your project, from the initial consultation to the final plan, can fluctuate. It typically spans between 2 to 6 weeks, with the duration influenced by factors such as project complexity and the season.

It's worth mentioning that the construction phase of the project also has a variable timeframe. Smaller, less complex projects may take only a day, while larger, more intricate ones could extend over several months.

We strongly advise booking your consultation during winter. This allows us to develop your plans before the spring rush, a period when landscaping projects are in high demand. By taking this proactive approach, we can prioritize your project and be ready to execute it as soon as weather conditions permit.

Planning ahead and scheduling your consultation early not only secures your place in our schedule but also ensures that your landscaping project is ready to roll out at the optimal time. We encourage you to reach out to us during winter to get a jump on your plans and circumvent potential spring season delays.

Before Your Consultation

Explore Our Portfolio

When it comes to landscape design, landscape installation, and outdoor living, selecting the right designer is crucial. Take the opportunity to browse through our portfolio, where you can view 3D landscape design renderings and examples of our outdoor living installations to know our capabilities.

Consider Your Budget

It's important to have a realistic budget in mind before you start the design process. This will help us to create a design that meets your needs without breaking the bank.

Get Clear On Your Vision

What do you want your landscape to look like? What features are most important to you? Do you want a space for entertaining, relaxing, or playing? Once you have a good understanding of your vision, you can start to communicate it to our designers and develop a design quicker!

Case Study: Hillside Oasis

**Location:**

Mt. Lebanon

Budget:

\$80,000-\$100,000

Project Features:

- Two EP Henry Cast Stone block retaining walls with EP Henry Belmont coping
- Multiple beds with decorative stone accents
- Various semi-formal plant materials

Vision

The client sought a refined outdoor transformation, blending formal and natural elements. We opted for cast stone retaining walls for their clean yet organic appearance. A portable fire pit request inspired a specialized hardscaping pad using Stratford pavers. Decorative stones added texture contrast to planting beds, while carefully chosen plants enhanced the semi-natural theme.

Challenge

Confined neighborhood spaces, divided by fences and stepped walkways, hindered access. We used wheelbarrows and ramps over traditional machines for material transport. A systematic approach to load management lightened the overall weight, and smaller plant materials were procured for efficiency. Overcoming these challenges contributed to the project's success, alongside navigating permitting processes and selecting pet-friendly plants.



The Design Plan

Our focus initially centered on obtaining municipal permits for our cast stone retaining walls and firepit paver pad, a pivotal first step in planning. Once approved, we conceptualized the beds, incorporating #3 river rock for visual allure. Plants like Glossy Abelia and Red Twig Dogwood were strategically incorporated for a harmonious, semi-natural theme. This formed the cornerstone of our design, culminating in a cohesive and visual narrative. Finally, at the client's request, we laid down fresh sod for a polished look.

The Result

Meticulous preparation for this backyard oasis project played a pivotal role in achieving outstanding results in our landscape design execution. Our client expressed immense satisfaction with the seamless handling of the entire design process, from inception to completion, all while adhering to the established budget and reflecting her aesthetic preferences. Delighted with our work, she has since entrusted us with the ongoing maintenance of her landscape, ensuring that her backyard not only thrives but also ages gracefully over time.

Case Study: French Chateau

**Location:**

Upper St. Clair

Budget:

\$100,000-\$120,000

Project Features:

- Patio replacement pavers
- Wall pillars
- Edging repair
- Installation of seating walls, stepping and decorative stones, foundational plants, and tree buffers

Vision

Our client's love for Boxwoods, with their malleability and lush green hues, inspired a formal design approach reminiscent of the Palace of Versailles. We balanced this elegance with practicality, opting for a semi-formal landscape design. This allowed us to center the design around Boxwoods while incorporating plants suited to Pennsylvania's climate, achieving a harmonious fusion of formal aesthetics and local practicality.

Challenge

The main challenge in this project was deciphering the client's stylistic vision and ensuring plant choices thrived in the regional climate. With existing backyard plants, achieving seamless flow throughout the property was key. We sourced plants that balanced aesthetics with controlled growth and complexity. Our design aimed to exceed the client's expectations for a harmonious and flourishing landscape.



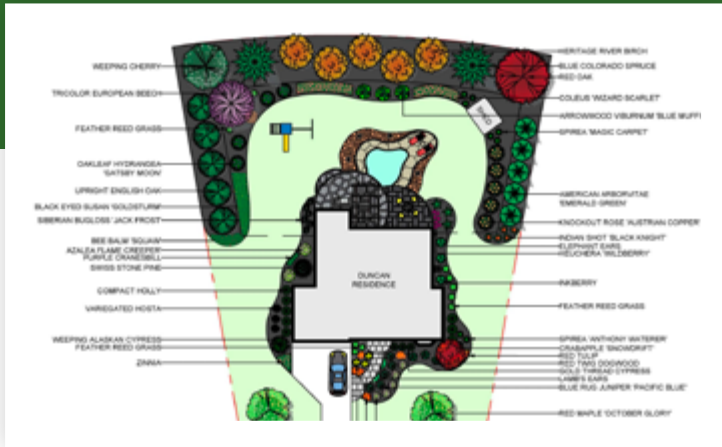
The Design Plan

Starting with a property layout, we analyzed the site's functionality and identified strategic entry points based on client usage patterns. Precise dimensions for hardscaping were calculated, ensuring cohesion with existing patio dimensions. Attention to detail rectified discrepancies, such as off-center irrigation caps, to maintain consistency. Transitioning to planting, our selection aimed for multi-seasonal interest and alignment with the semi-formal design theme. Notable additions included Red Twig Dogwood and Oakleaf Hydrangea. Boxwoods, boulders, and decorative stone were strategically integrated to enhance natural ambiance and fill negative space.

The Result

Enthralled by our initial design as presented through detailed documentation and computer-generated visuals, our client's fondness deepened. With minor adjustments crafted to her preferences, the final chapter awaited – the installation. As her dream metamorphosed into reality upon completion, we engaged in a thorough walkthrough of the property, ensuring that every nuance of the plan was not only executed but exceeded expectations. The harmonious blend of precision and creativity culminated in a landscape that not only met her vision but surpassed it, leaving our client delighted with the living masterpiece that now graced her property.

Our Process



Our Process Puts You First

We lead with a Communication Promise that ensures we respond to messages within an hour (or within 24 hours if you catch us during non-business hours), and we conduct a thorough Dream Meeting or Lawn & Plant Analysis before the start of your project. This is where we evaluate your property to identify issues you might not be aware of while learning more about your wishes and concerns.

You'll receive regular project updates and find it easy to see your schedule and pay invoices. With our years of local experience, we're able to customize and simplify your landscaping project to make even the most complex outdoor renovations or detailed lawn treatment plans feel manageable and worry-free for you as a property owner.

Our science-based, technology-forward approach ensures precise results while protecting pollinators and nurturing soil health. Fill out our contact form to meet our landscape designer and property care teams and get started on your better backyard.



Step 1

Schedule An Appointment Online



Step 2

15-Minute Consultation Call



Step 3

Personalized Assessment & Dream Meeting



Step 4

Plan Proposal



Step 5

Plan Approval + Agreement Signing



Step 6

Installation And Continuous Care



Step 7

Final Walkthrough + Ongoing Maintenance

Funding Your Project



Dream Greener Programs

Each landscape project is unique, and the total cost of your outdoor space will be influenced by various factors. These include your property's size and layout, the existing state of your landscaping and hardscaping, any irrigation or drainage issues, the project's scope and schedule, and many other considerations. But to help you get started on budgeting your dream project, here is what you can expect each project to roughly cost.

Typical Pricing

Landscape Design

Our planning and design process is foundational to start the process of creating your Dream Space.

Planning and Design: \$750-\$2,500+

Softscape/Landscape Construction

Whether you're looking for a complete overhaul or small upgrades our team is here to help.

Grounds Clean-Up with Small Planting
Enhancement Upgrade: \$1,875 - \$8,000+

Green Space: \$8,000 - \$15,000+

Greener Space: \$10,000 - \$17,000+

Dream Space: \$20,000 - \$50,000+



About Dream Greener

Testimonials

The total package. Quality service and reliable. They communicate with emails about billing, upcoming and completed services. Pricing is fair for the luxury of someone else taking care of your yard. I highly recommend their service and look forward to using them in the years to come. —**Tracy K.** ★★★★★

High standards, high quality, professional, reliable. ..the list goes on. You'll sleep tight and dream greener, with these folks taking care of your property. This company is the real deal! —**Stephen M.** ★★★★★

Every interaction I've had with Dream Greener has been very professional and friendly. —**Shane B.** ★★★★★

Company History

Back in 2013, Dream Greener Lawn & Landscape started as a small, homegrown operation in Carnegie, Pennsylvania, right out of a residential garage. Fast forward to today, and our landscape contracting business has grown substantially.

Our headquarters now sits on a spacious six-acre property, carefully developed to include a thriving nursery and a range of top-notch landscaping materials like premium soil, compost, mulch, decorative stone, gravel, and more.

We've expanded our reach and proudly serve a wide-ranging client base, with a focus on areas like Mt. Lebanon, Pennsylvania, and the neighboring communities of Betel Park, Presto, Southpointe, Oakdale, and Pittsburgh, among others.

At Dream Greener Lawn & Landscape, we take a science-based approach to our work. We rely on empirical science as the foundation of our services, which cover everything from lawn care and landscape design to plant health management and snow removal, as well as various specialized offerings.



Contact Information

Get In Touch

If you're dealing with a pest infestation on your property and want the peace of mind that comes with year-round care for your home, we're here to help!

 [\(412\)835-1035](tel:(412)835-1035)

 dreamgreener.com

 facebook.com/dreamgreener

Next Steps

Schedule an appointment Online

15-Minute Consultation Call

Personalized Assessment & Dream Meeting

Plan Proposal

Plan Approval + Agreement Signing

Installation + Continuous Care

Final Walkthrough + Ongoing Maintenance



DREAM
GREENER

LAWN & LANDSCAPE

dream properties growing greener!